

## Increase your safety with a AIS CTRX CARBON Transponder onboard.

Imagine a situation where your visibility is suddenly limited due to fog crossing a traffic separation scheme or you are approaching a coast in darkness with significant coastal traffic. If you are suddenly hit by heavy rain making your radar almost unusable when sailing into an area with heavy traffic. In these situations, the AIS is your best friend onboard. The AIS CTRX CARBON makes sure that the merchant ships can see you and that you have a much greater chance of seeing them.



### The AIS CTRX CARBON Transponder can easily be installed onboard.

The AIS Transponder is best mounted below deck in a location where 12 V DC can be found and where its easy to connect a data cable to a PC or a plotter system. You will also need to connect antenna cables to the VHF- and GPS antennas. It is important that you verify with your plotter or PC manufacturer that it can handle AIS data before you start the installation.

## AIS CTRX CARBON

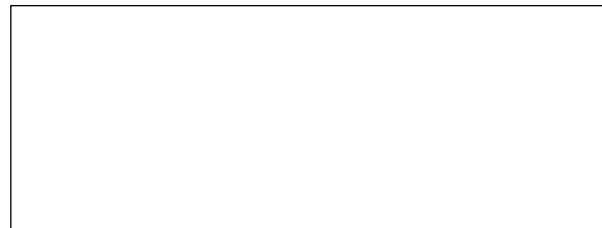
- SEE AND BE SEEN
- INCREASE YOUR SAFETY
- BE SAFER IN DIFFICULT SITUATIONS
- WORKS IN ALL WEATHERS
- SEE BEHIND CORNERS AND ISLANDS
- A MODULAR AND FLEXIBLE SYSTEM
- THE NAVIGATION OF THE FUTURE



**SOON IN EVERY MANS BOAT!**



Vendevägen 90  
182 32 DANDERYD  
SWEDEN  
Phone +46 8 54593900, Fax +46 8 54593910.  
info@trueheading.se



True Heading retailer



## AIS (Automatic Identification System)

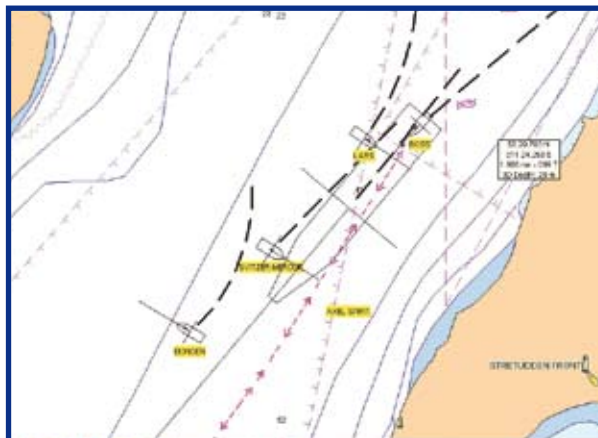
Since December 31st 2004 AIS has been compulsory onboard all merchant ships worldwide. Now several other types of vessels, pleasure crafts and aids to navigation, like buoys and lighthouses, are increasingly being fitted with AIS technology.



AIS is a system that provides data from all ships or devices fitted with an AIS Transponder. Received AIS data can be presented on electronic charting software and many of today's radars can overlay AIS data on the radar display to uniquely identify a radar target. AIS display over radar is the most effective way to present AIS targets and will become the most common application of this technology.

The great advantage of AIS is that it makes it possible to see behind islands and corners something that radar can not do. AIS is less sensitive to the

effects of heavy rain, snow and sea state and also provides much more precise information about the ships of interest within your coverage.



AIS has already been implemented worldwide giving the navigator improved situational awareness, increased navigational safety and reduced risk of collision. Due to its near real-time update rate, AIS is unrivaled in terms of vessel tracking and collision avoidance technology.

AIS is divided into different classes. The Class A transponder is mainly used by merchant marine and ships above 300 GT; the Class B is typically used by pleasure crafts, fishing vessels and smaller ships or workboats that are not required to carry the Class A type. All AIS transponders transmit the size and type of a ship (e.g. tugboat, pleasure craft), together with the ship's name, call sign and MMSI number (a unique vessel identification number, normally provided by the national post and telecommunication authority). Merchant ships also transmit additional information such as next port of call, ETA, draft, type of cargo and navigational status (e.g. underway using engine or restricted maneuverability etc.).

All of this AIS data can easily be graphically displayed on appropriate electronic charting software.

AIS also contributes to a faster response should an accident occur and many of today's search and Rescue operations are increasingly reliant on AIS data. With an AIS Transponder onboard a vessel can be found faster and more efficiently. In the near future the AIS system onboard will also be used as a monitoring and alarm system for other onboard systems- all in one package.

## Official AIS supplier to the Volvo Ocean Race.

Due to the great advantages of AIS there are already a substantial number of pleasure crafts fitted with Class B AIS. The AIS CTRX is also popular to use at yacht races for both safety and yacht tracking. For the Volvo Ocean Race 2008-2009 all of the participating boats have been fitted with AIS CTRX from True Heading AB. This will give the boats and crews a new dimension of yacht racing since AIS will give instant information about the other boats when in VHF coverage.

