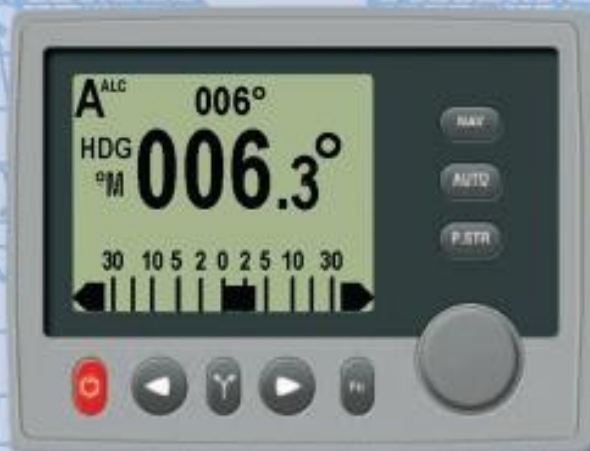


ComNav[®]



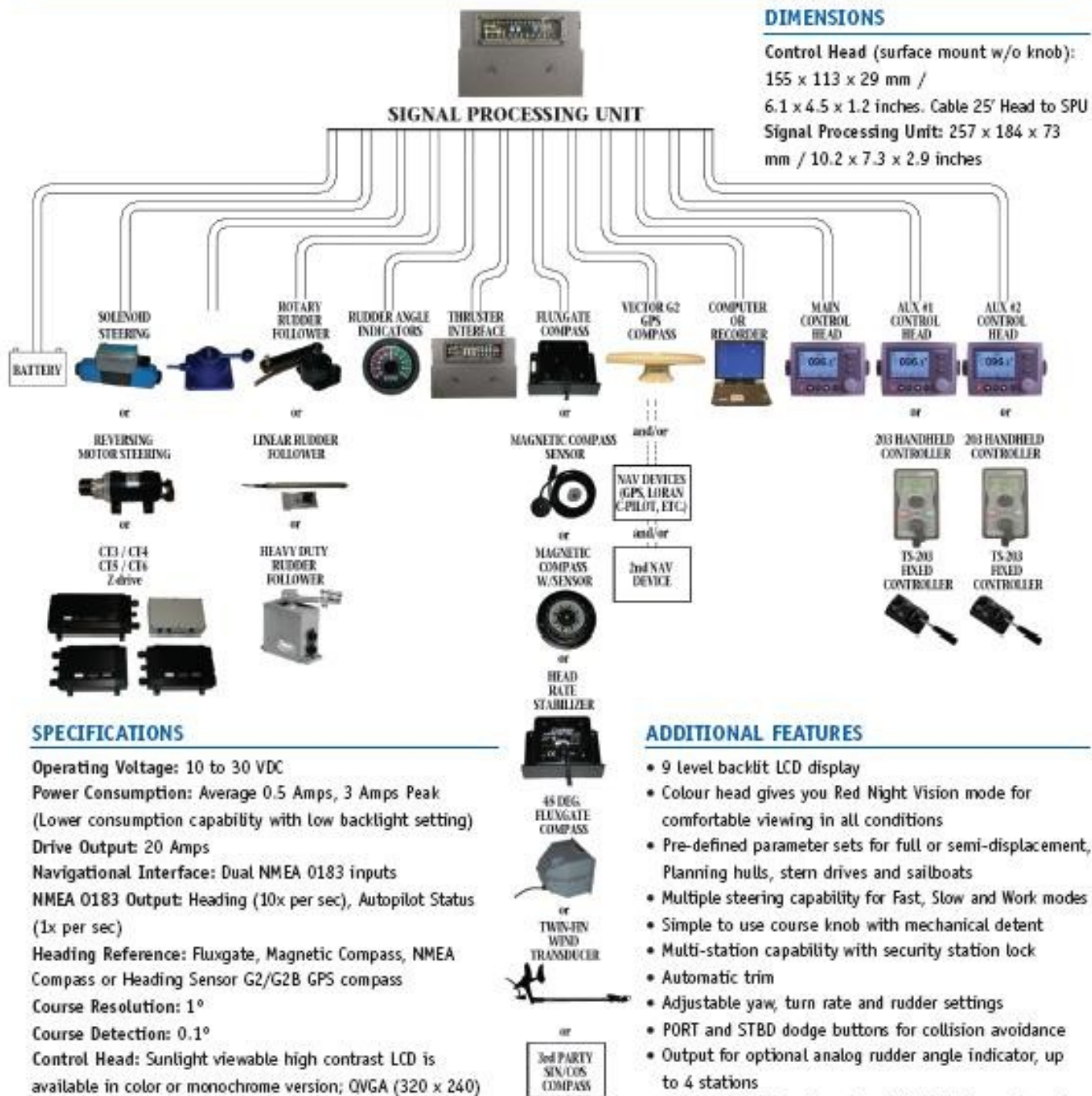
COMMANDER Autopilot Model P2

ENGINEERED FOR PERFORMANCE

- Auto Learning using Intelligent Steering Technology — IST
- Auto Setup — automatic drive detection, automatic pilot calibration & automatic compass compensation
- Auto Sea State adjustment for reliability in all weather conditions
- Sunlight Viewable TFT LCD or silver backed high contrast monochrome LCD
- Work Mode — Superbly suited for professional performance on vessels requiring ultimate rudder response
- Adjustments can be made “on the fly”
- Advanced Power Features include automatic helm bias, automatic leeway control for minimizing course errors due to wind and tide
- Automatic Thruster assist for dead-ahead slow or station keeping (option)
- Proportional Rate Control to provide gentle smooth response at fast cruising speeds
- NAV Mode provides adaptive precise track steering
- NMEA 0183 input/output
- Quick Turn Selection — continuous circle, U-turn, Emergency MOB (Williamson-Recovery turn)
- FISH ZAG to allow the sport fisher to mimic the actions of live prey more closely
- Simple touch 8 button illuminated keypad
- Multi-language capability configurable in English, French, Italian, Spanish and Icelandic
- Universal Mount — surface mount, flush mount or bracket mount
- Waterproof — Control head to commercial grade IP67 standards
- CE certified for EMI and RFI immunity
- Extended 3 year warranty



COMMANDER Autopilot Model P2 • SYSTEM CONFIGURATIONS & OPTIONS



SPECIFICATIONS

Operating Voltage: 10 to 30 VDC
 Power Consumption: Average 0.5 Amps, 3 Amps Peak
 (Lower consumption capability with low backlight setting)
 Drive Output: 20 Amps
 Navigational Interface: Dual NMEA 0183 inputs
 NMEA 0183 Output: Heading (10x per sec), Autopilot Status
 (1x per sec)
 Heading Reference: Fluxgate, Magnetic Compass, NMEA
 Compass or Heading Sensor G2/G2B GPS compass
 Course Resolution: 1°
 Course Detection: 0.1°
 Control Head: Sunlight viewable high contrast LCD is
 available in color or monochrome version; QVGA (320 x 240)
 high resolution display

ADDITIONAL FEATURES

- 9 level backlit LCD display
- Colour head gives you Red Night Vision mode for comfortable viewing in all conditions
- Pre-defined parameter sets for full or semi-displacement, Planning hulls, stern drives and sailboats
- Multiple steering capability for Fast, Slow and Work modes
- Simple to use course knob with mechanical detent
- Multi-station capability with security station lock
- Automatic trim
- Adjustable yaw, turn rate and rudder settings
- PORT and STBD dodge buttons for collision avoidance
- Output for optional analog rudder angle indicator, up to 4 stations
- Fully compatible with onboard NMEA instruments and most steering systems
- Versatile Wind Mode for excellent sailboat steering

ComNav®

Distributor in Sweden

OBJ

True Heading AB
 Vendevägen 90
 182 32 DANDERYD, SWEDEN
 Tel: +46 8 54593900
 Tel: +46 8 6222660
 Fax: +46 8 54593910